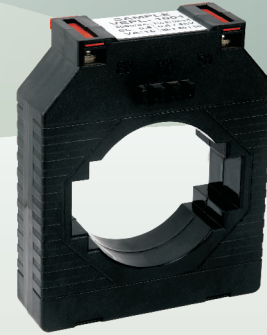




Features:

- ▶ ABS plastic moulding
- ▶ Apertures accepting a wide range of bus bar
- ▶ CTs are ultrasonically welded and unbreakable



Advantages:

- ▶ Easy bus bar mounting
- ▶ Highly cost effective
- ▶ Compact in size

Applications:

- ▶ Switchgear
- ▶ Distribution system
- ▶ Generator sets
- ▶ Control Panels
- ▶ Control Devices
- ▶ Overload protection

Input Specifications

Rated Primary Current 400 A to 2500 A
 Rated Secondary Output 5 A

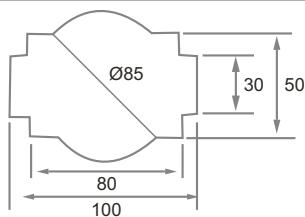
Technical Specifications

Rated Burden 2.5 VA, 5 VA, 15 VA, 30 VA and 45 VA
 Class of Accuracy 1 and 0.5
 Over Load Withstand 1.2 times rated current for 1 sec
 Rated Dynamic Current 2.55x Ith
 Short Circuit Thermal Current Ith 60xIn (rated primary current for 1 sec)
 Insulation Class Class E
 Max. Operating Voltage 720 V maximum
 Insulation test voltage 3KV AC for 1 minute
 Compliance Standard VE404 and IEC185

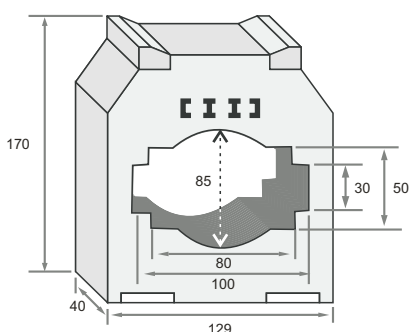
Environmental Specification

Operating Temperature 20°C to 70°C
 Storage Temperature 0° to 55°C
 Humidity <95% RH (non-condensing)

Dimensions



Bus Bar Dimension : 30 x 100, 80 x 50, Ø85



Outer Dimension : 129 (W) x 170 (H) x 40 (D)

Ordering Information

Primary Current	Class 1		Class 0.5	
	Burden (VA)	Ordering Code	Burden (VA)	Ordering Code
500	2.5		2.5	100308510.42
	5	100308510	5	100308510.43
	10	100308510.02		
600			2.5	100308510.44
	5	100308510.03	5	100308510.45
	10	100308510.04	10	100308510.46
750			2.5	100308510.47
	5	100308510.05	5	100308510.48
	10	100308510.06	10	100308510.49
800	5	100308510.07	5	100308510.50
	10	100308510.08	10	100308510.51
	15	100308510.09	5	100308510.52
1000	5	100308510.10	10	100308510.53
	10	100308510.11		
	15	100308510.12		
	30	100308510.13		
1200	5	100308510.14	5	100308510.54
	10	100308510.15	10	100308510.55
	15	100308510.16		
	30	100308510.17		
1250	5	100308510.18	5	100308510.56
	10	100308510.19	10	100308510.57
	15	100308510.20		
	30	100308510.21		
1500	5	100308510.22	5	100308510.58
	10	100308510.23	10	100308510.59
	15	100308510.24	15	100308510.60
	30	100308510.25		
1600			5	100308510.61
	10	100308510.26	10	100308510.62
	15	100308510.27	15	100308510.63
	30	100308510.28		
1800			5	100308510.64
	10	100308510.30	10	100308510.65
	15	100308510.31	15	100308510.66
	30	100308510.32		
2000			5	100308510.67
	10	100308510.34	10	100308510.68
	15	100308510.35	15	100308510.69
	30	100308510.36	30	100308510.70
2500			5	100308510.71
	10	100308510.38	10	100308510.72
	15	100308510.39	15	100308510.73
	30	100308510.40	30	100308510.74
			5	100308510.41